



INVITATION TO BID FOR
Procurement of Laminated Partition with Glass

1. The **ENERGY REGULATORY COMMISSION (ERC)**, through the *2017 General Appropriations Act*, intends to apply the sum of **FOUR MILLION THREE HUNDRED NINETEEN THOUSAND PESOS, (4,319,000.00) 12% VAT inclusive** being the Approved Budget for the Contract (ABC) to payments under the contract for the **Procurement of Laminated Partition with Glass, Lot No. 2017-16**. Bids received in excess of the ABC for each lot shall be automatically rejected at bid opening.
2. The **ERC** now invites Bids for the **Procurement of Laminated Partition with Glass**. Delivery of the GOODS is required to be completed **One Hundred Twenty (120) calendar days from receipt of "Notice to Proceed"** and subject to terms and conditions as may be agreed upon by ERC and the winning bidder. Bidders should have completed, within the last five years from the date of submission and receipt of bids, a contract similar to the Project. The description of an eligible Bidder is contained in the Bidding Documents, particularly, in Section II. Instructions to Bidders.
3. Bidding will be conducted through open competitive bidding procedures using a non-discretionary "pass/fail" criterion as specified in the 2016 Revised Implementing Rules and Regulations (IRR) of Republic Act (RA) 9184, otherwise known as the "Government Procurement Reform Act".

Bidding is restricted to Filipino citizens/sole proprietorships, partnerships, or organizations with at least sixty percent (60%) interest or outstanding capital stock belonging to citizens of the Philippines, and to citizens or organizations of a country the laws or regulations of which grant similar rights or privileges to Filipino citizens, pursuant to RA 5183.
4. Interested bidders may obtain further information from ERC-BAC Secretariat and inspect the Bidding Documents at the address given below, **Monday to Friday, 8:00 A.M. to 5:00 P.M. from 24 August 2017 (Thursday) until 10:00 A.M. of 18 September 2017 (Monday)**.
5. A complete set of Bidding Documents for the **Procurement of Laminated Partition with Glass** may be acquired by interested Bidders starting **24 August 2017 (Thursday), 8:00 A.M. to 5:00 P.M.** from the address below upon payment of a non-refundable fee of **Five Thousand Pesos (PhP5,000.00)**.

It may also be downloaded free of charge from the website of the Philippine Government Electronic Procurement System (PhilGEPS), provided that Bidders shall pay the applicable (non-refundable) fee for the Bidding Documents not later than the submission of their bids.

6. The ERC-BAC will hold the **Pre-Bid Conference on 6 September 2017 (Wednesday), 10:00 A.M. at the Mezzanine Floor, Pacific Center Building, San Miguel Avenue, Pasig City**, which shall be open to prospective bidders.
7. Bids must be duly received by the ERC-BAC Secretariat at the address below on or before **18 September 2017 (Monday) at 10:00 A.M.** All Bids must be accompanied by a bid security in any of the acceptable forms and in the amount stated in ITB Clause 18.

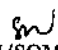
Bid opening shall be on **18 September 2017 (Monday) at 10:30 A.M.** at the Mezzanine Floor, Pacific Center Building, San Miguel Avenue, Pasig City. Bids will be opened in the presence of the bidders' representatives who choose to attend at the address below. Late bids shall not be accepted.

8. The ERC-BAC reserves the right to reject any and all bids, declare a failure of bidding, or not award the contract at any time prior to contract award in accordance with Section 41 of RA 9184 and its IRR, without thereby incurring any liability to the affected bidder or bidders.
9. Please see attached **Annex "A"** for the Specification and **Annex "B"** for the Floor Plan.
10. For further information, please refer to:
Ms. Cherry Lyn S. Gonzales
BAC Secretariat Chairperson
Mezzanine Floor, Pacific Center Building, San Miguel Avenue, Pasig City
Tel No. **689-5312/689-5947/689-5350**
clsg@erc.gov.ph/procurement@erc.gov.ph

22 August 2017, Pasig City.



MARIA CORAZON C. GINES
BAC Chairperson


CLSG/LLG/RGMG/RRFM/SOM

ANNEX "A"

PROCUREMENT OF LAMINATED PARTITION WITH GLASS

END-USER	DESCRIPTION
1) Consumer Affair Service (CAS) – CSD Officers/Staff	Height: 150 cm (<i>All Partitions Height is 150cm and laminated every worktop should be laminated</i>) Length: (<i>Please see details below</i>) Color: Off-white/Beige

PARTICULARS	QUANTITY
DIVISION CHIEF AREA	
Laminated Modular Partition with Glass H150cm x L90cm	2
Laminated Modular Partition with Glass H150cm x L45cm	2
Door Laminated with Glass H150cm x L90cm	2
STAFF AREA	
DIVISION/S	
Laminated Modular Partition with Glass H150cm x L140cm	12
Laminated Modular Partition with Glass H150cm x L70cm	12
Laminated Modular Partition with Glass H150cm x L80cm	18
LAMINATED TABLES	
Worktop Laminated: L180cm x D70cm	14
Side Worktop Laminated: L90cm x D45cm	14
Mobile Pedestal Cabinet	14
Leg Support (Pair)	14
PANTRY AREA	
Laminated Modular Partition with Glass H150cm x L100m	1
Laminated Modular Partition with Glass H150cm x L120m	1
Laminated Modular Partition with Glass H150cm x L120m	1
SCOPE OF WORK:	
Dismantling of Existing Partitions	
Installation of Modular Laminated Partitions	

9

END-USER	DESCRIPTION
2) Regulatory Operations Service (ROS)	Worktop Laminated Workside Laminated Sliding Laminated Doors with Glass Laminated Door with Glass Laminated Folding Accordion Door Mobile Pedestal for every worktop Keyboard tray for every worktop Executive Chair for every cubicle Color: Beige or Hazelnut

PARTICULARS	QUANTITY
SERVICE DIRECTOR AREA (1)	
Laminated Partition with Glass H2.4m x L2.2m	1
Laminated Partition with Glass H2.4m x L1.6m	8
Laminated Door W1.0m	1
Worktop Laminated L-shaped: L1.75m, Depth 0.7m	1
Mobile Pedestal	1
Keyboard Tray	1
DIVISION CHIEF AREA (2)	
Laminated Partition with Glass H1.8m x L1.25m	8
Laminated Partition with Glass H2.4m x L1.5m	2
Worktop Laminated L-shaped: L1.75m, Depth 0.7m	2
Mobile Pedestal	2
Keyboard Tray	2
SUPERVISOR AREA (6)	
Laminated Partition with Glass H1.5m x L1.5m	6

aght

Laminated Partition with Glass H1.5m x L1.6m	8
Laminated Partition with Glass H1.5m x L0.8m	6
Worktop Laminated: L1.5m x W0.6m	6
Side worktop Laminated: L0.9m x W0.5m	6
Leg Support	6 Sets
Mobile Pedestal	6
Keyboard Tray	6
TECHNICAL STAFF AREA (56)	
Laminated Partition with Glass H1.5m x L1.8m	4
Laminated Partition with Glass H1.5m x L1.6m	65
Laminated Partition with Glass H1.5m x L1.25m	60
Laminated Partition with Glass H1.5m x L0.5m	60
Worktop Laminated: L1.25m x W0.6m	56
Side Worktop Laminated: L0.9m x W0.5m	56
Leg Support	56 sets
Mobile Pedestal	56
Keyboard Tray	56
CONFERENCE AREA	
Laminated Partition with Glass H1.8m x L1.5m	16
Laminated Partition with Glass Door W1.0m	3
Laminated Folding Accordion Door H1.8m x W6m	1
PANTRY	
Laminated Partition with Glass H1.8m x L1.35m	2
SCOPE OF WORK	
Dismantling of Existing Partitions	
Installation of Modular Laminated Partitions	

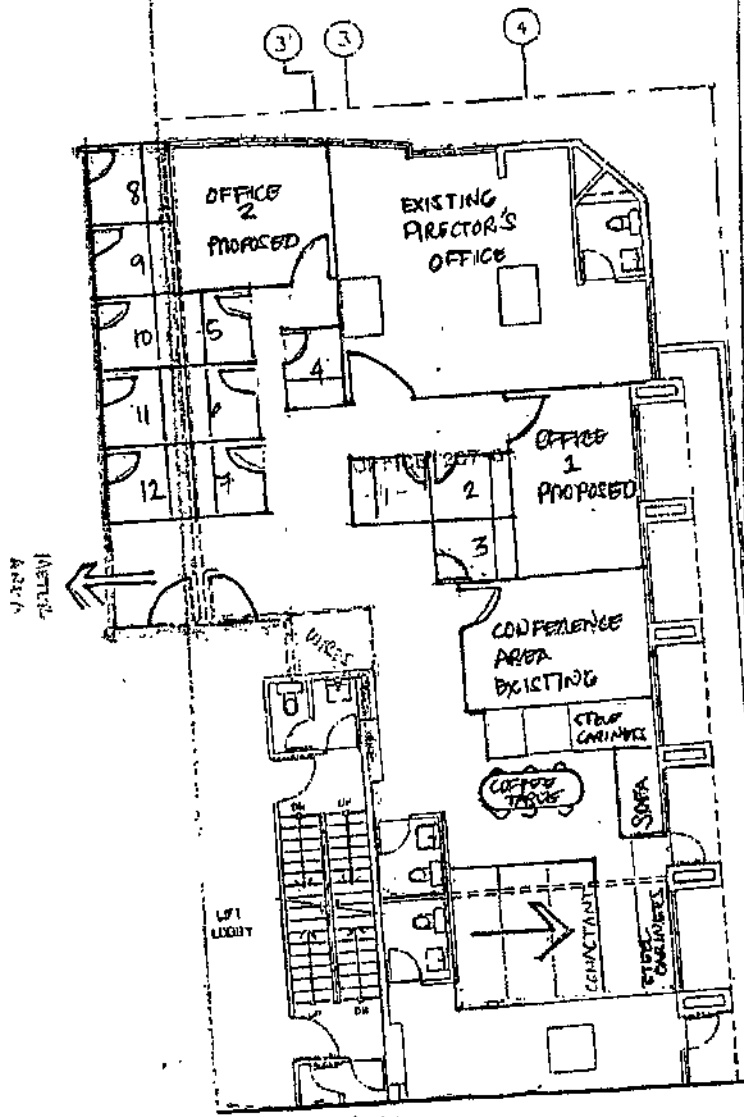
END-USER	DESCRIPTION
3) Office of the General Counsel and Secretariat (OGCS) - Officer/s and Staffs	Height: 150 cm (<i>All Partitions Height is 150cm and laminated every worktop should be laminated</i>) Length: (<i>Please see details below</i>) Color: Off-white/Beige

PARTICULARS	QUANTITY
STAFF AREA	
DIVISION/S	
Laminated Modular Partition with Glass H150cm x L140cm	11
Laminated Modular Partition with Glass H150cm x L70cm	11
Laminated Modular Partition with Glass H150cm x L80cm	15
LAMINATED TABLES	
Worktop Laminated: L180cm x D70cm	11
Side Worktop Laminated: L90cm x D45cm	11
Mobile Pedestal Cabinet	11
Leg Support (Pair)	11
PANTRY AREA	
Laminated Modular Partition with Glass H150cm x L100m	1
Laminated Modular Partition with Glass H150cm x L120m	1
Laminated Modular Partition with Glass H150cm x L120m	1
Total Partitions and Tables	11
SCOPE OF WORK	
Dismantling of Existing Partitions	
Installation of Modular Laminated Partitions	

END-USER	DESCRIPTION	QUANTITY
4) Financial and Administrative Service (FAS)	LAMINATED PARTITION WITH GLASS Height: 150cm Color: beige	1 Lot
	LAMINATED PARTITION (Provision for conference area)	1 Lot
	LAMINATED PARTITION FOR DIVISION CHIEF (with half partition, half glass door complete with door knob)	1 Lot
	WORKTOP FOR FAS STAFF (provision for side table depending on the end-user)	1 Lot
	LAMINATED TABLE WITH SIDE TABLE (for division chief)	1 Lot
	MOBILE PEDESTAL CABINET	1 Lot
	SCOPE OF WORK: <ol style="list-style-type: none"> 1. Dismantle existing modular partitions. 2. Install new modular partition. 	

M 8/17
 @ 2:45pm

ANNEX “B”



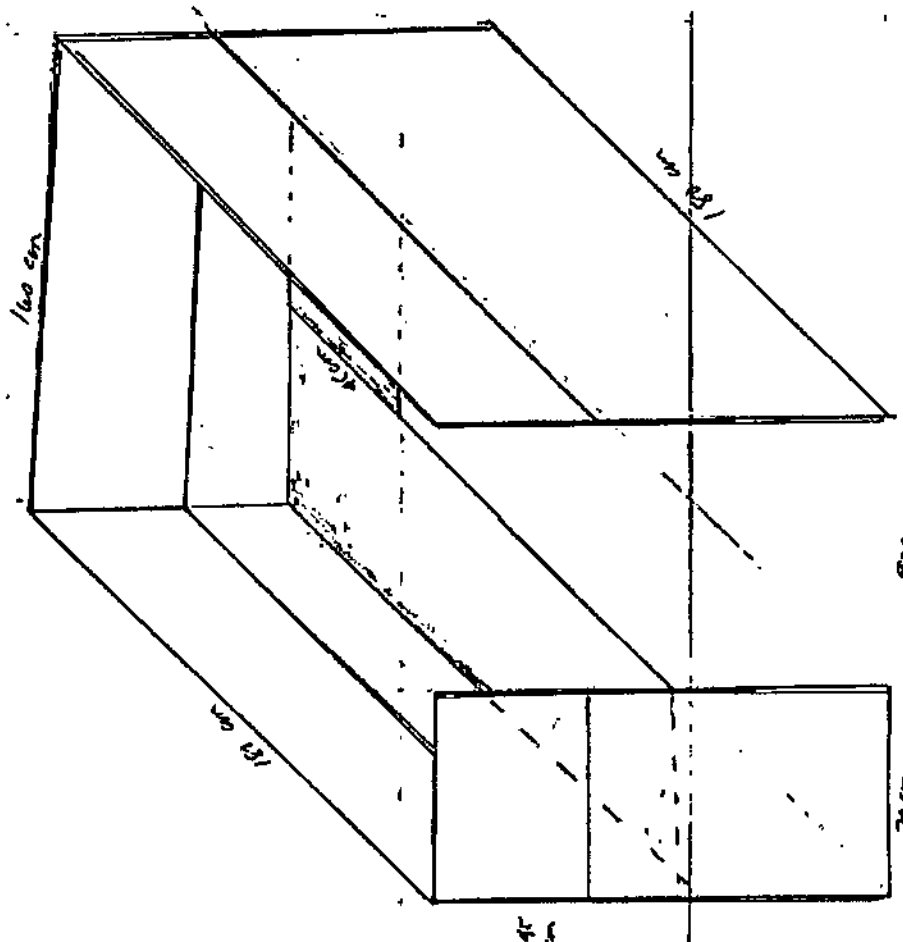
CAS - CSD
 PROPOSED PARTITION
 MODULAR

NOT TO SCALE

SCALE 1:200

J. J. J.

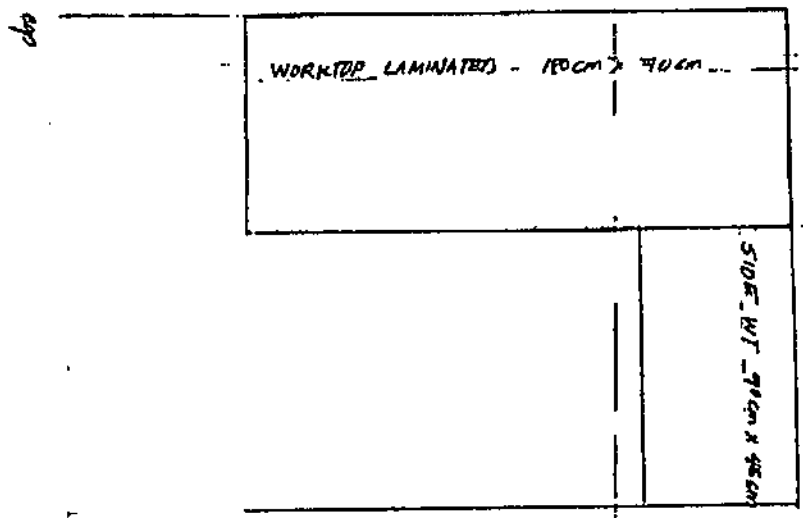
CAC-600



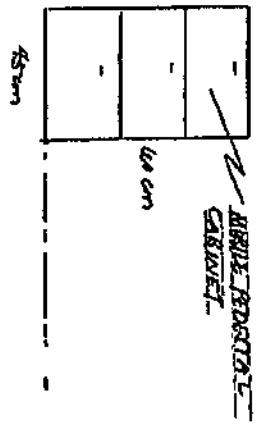
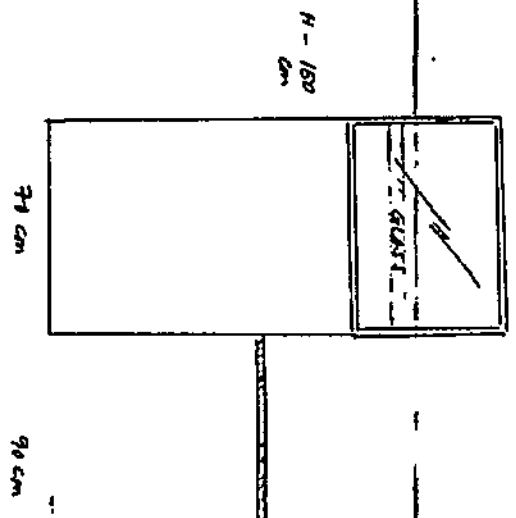
gopal

CAS - CSD

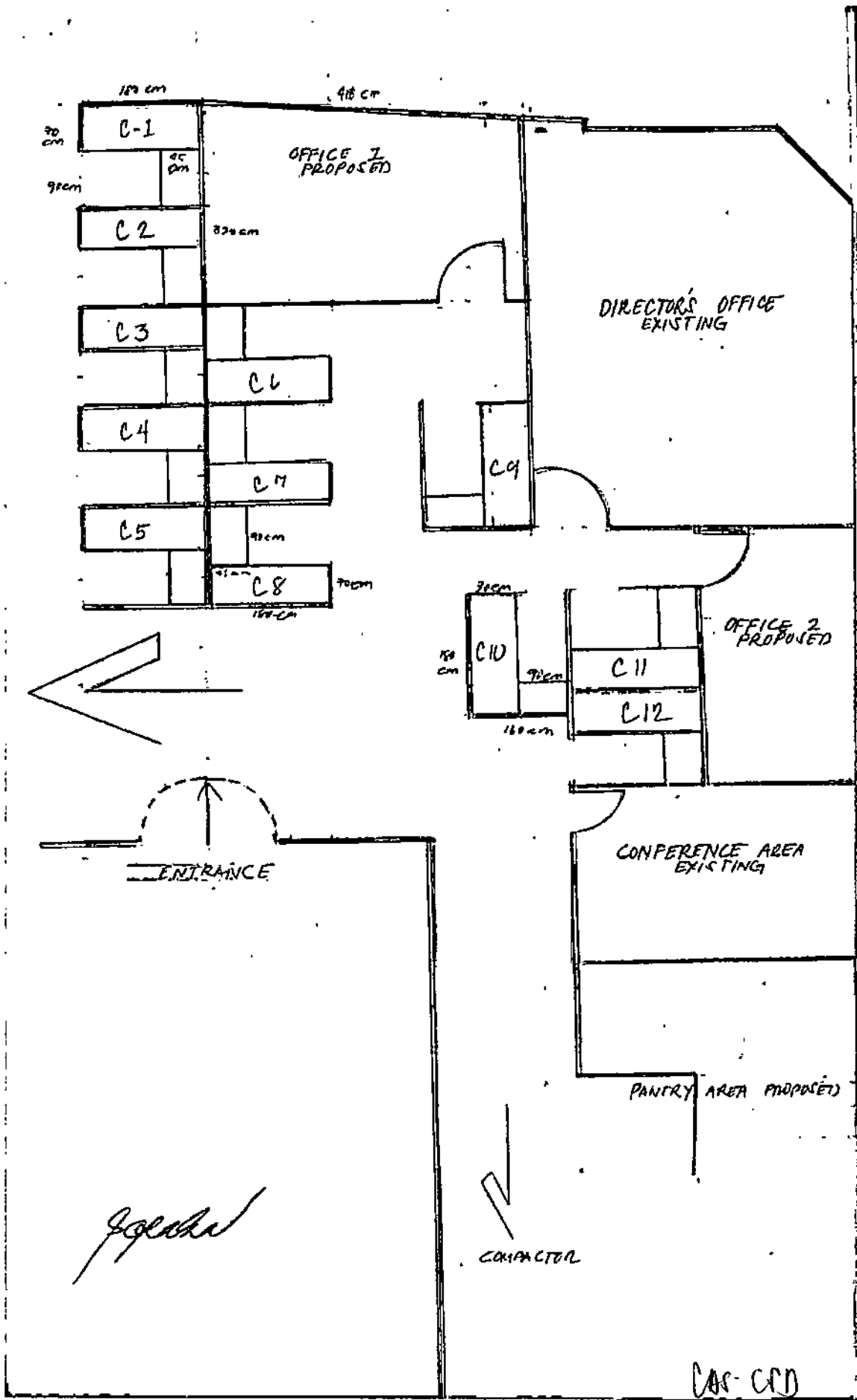
TOP VIEW



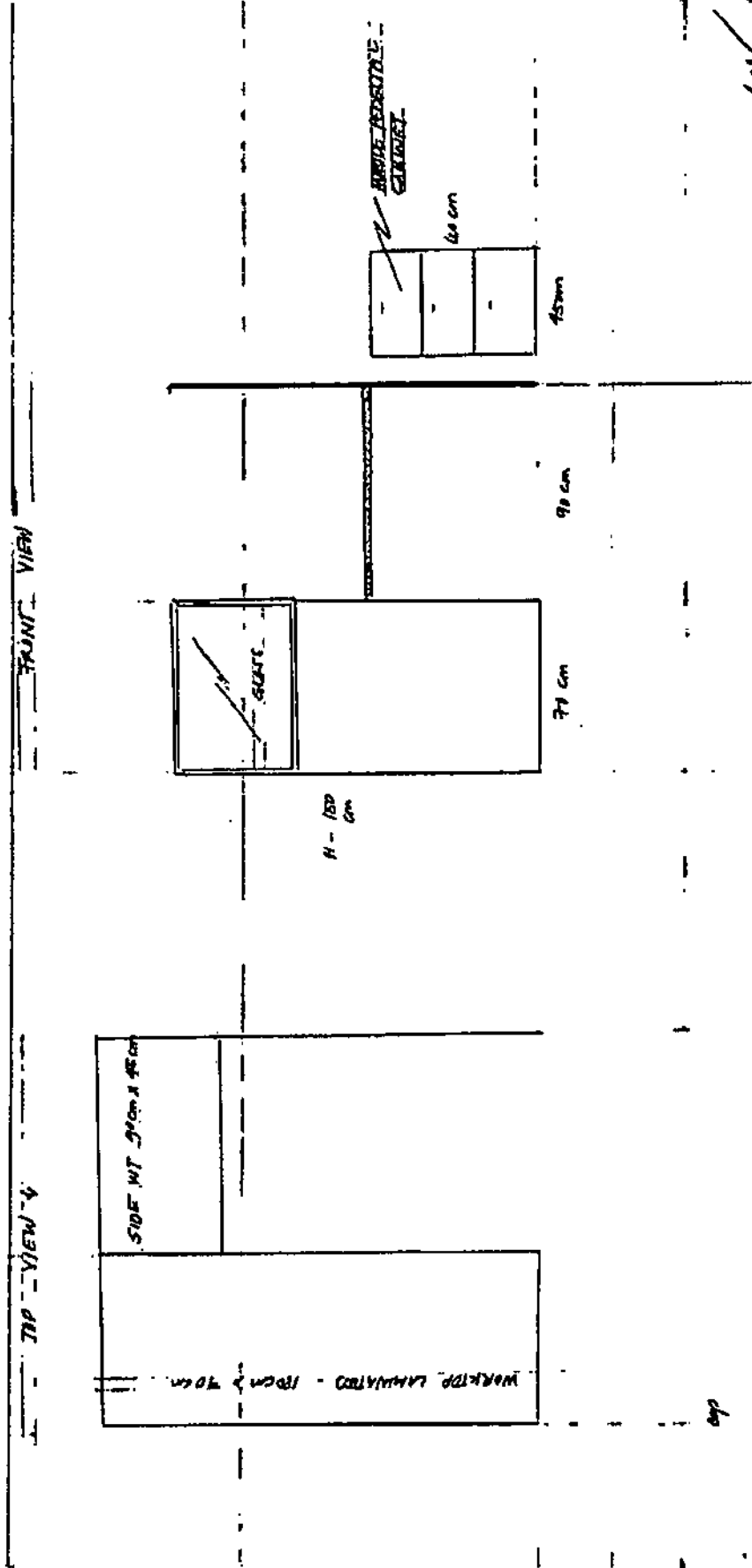
FRONT VIEW



panels

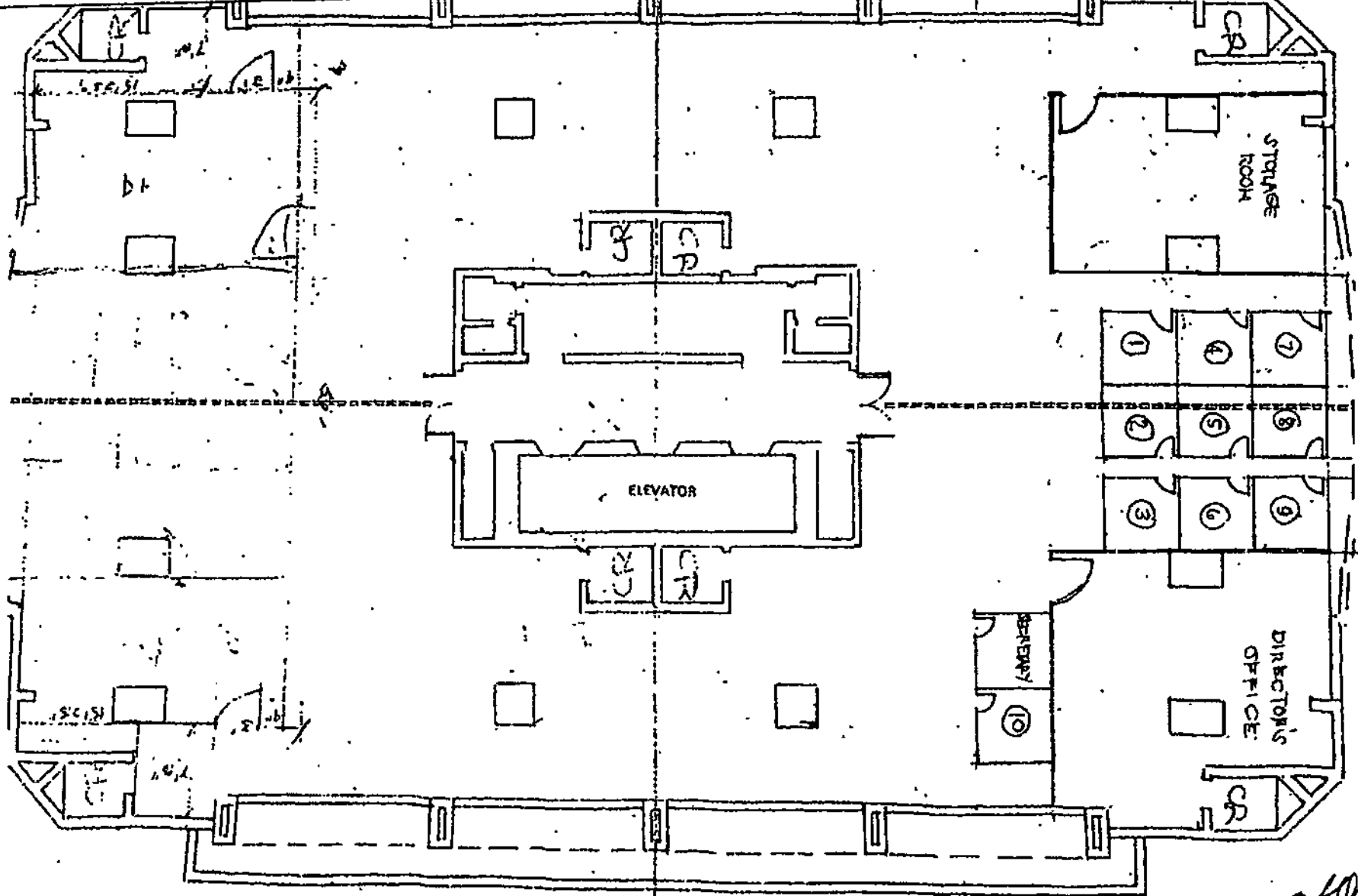


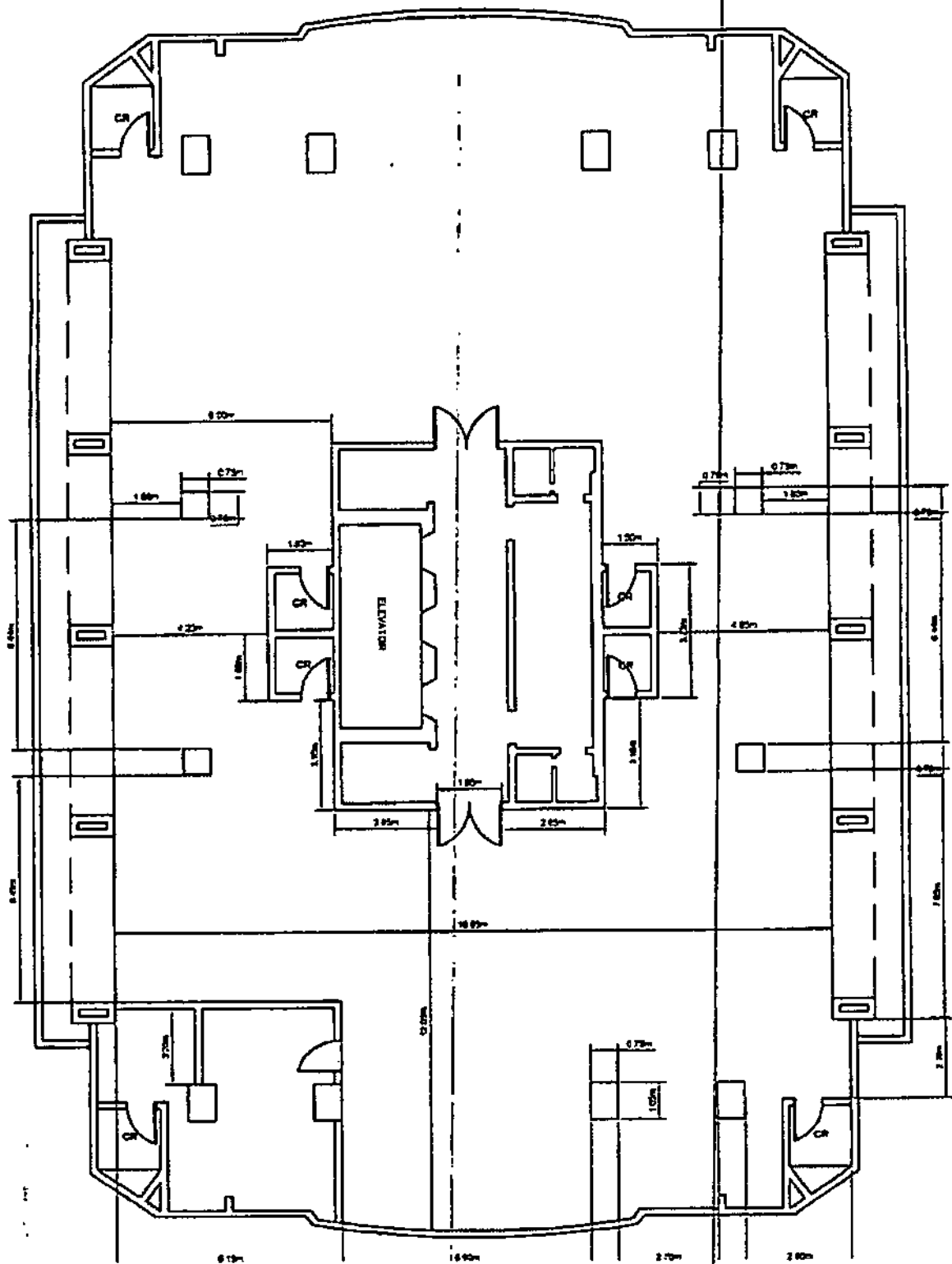
OFFICE OF THE GENERAL COUNSEL
AND SECRETARIAT



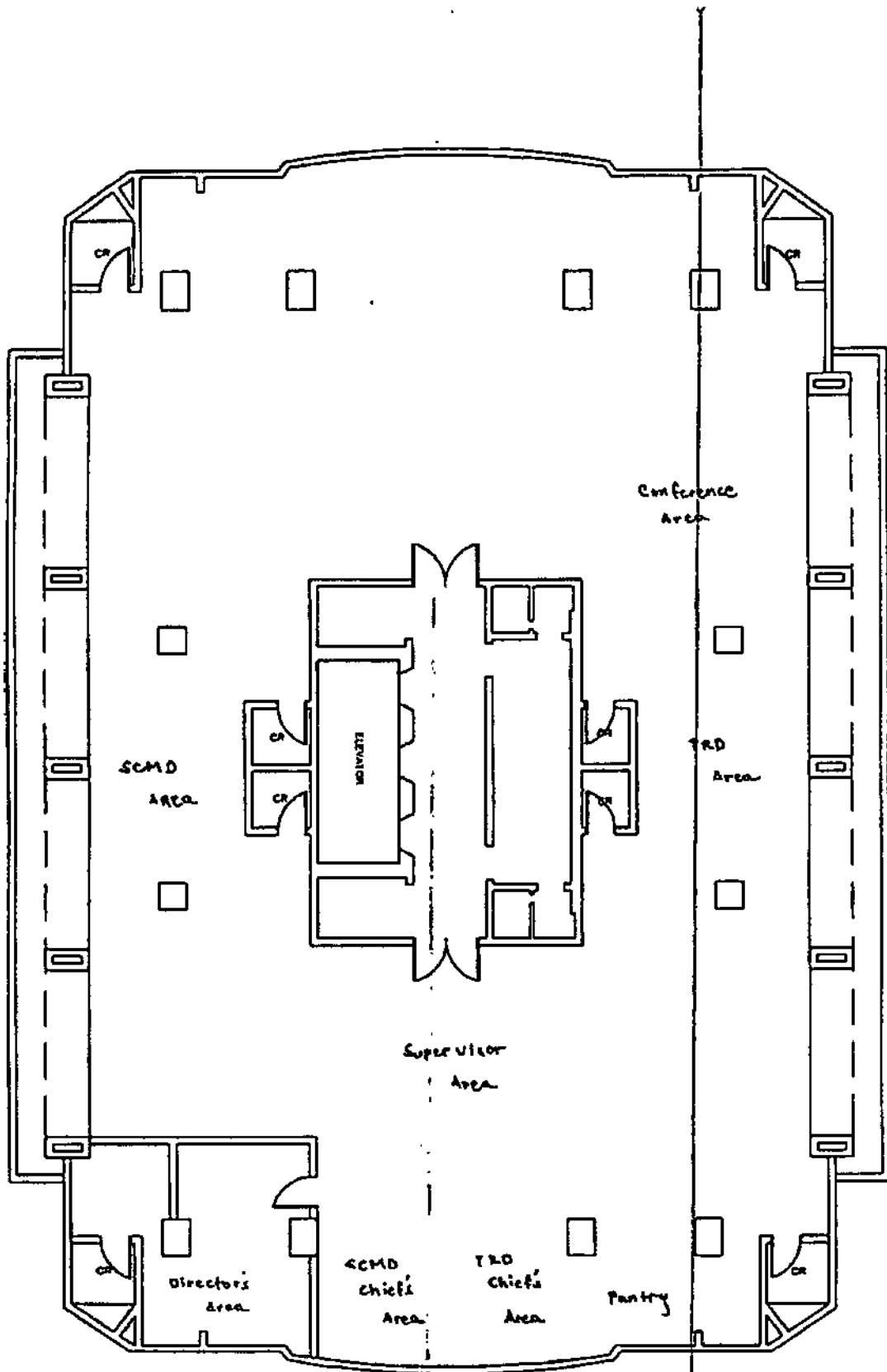
Handwritten signature

OFFICE OF THE GENERAL COUNSEL
AND SECRETARIAT

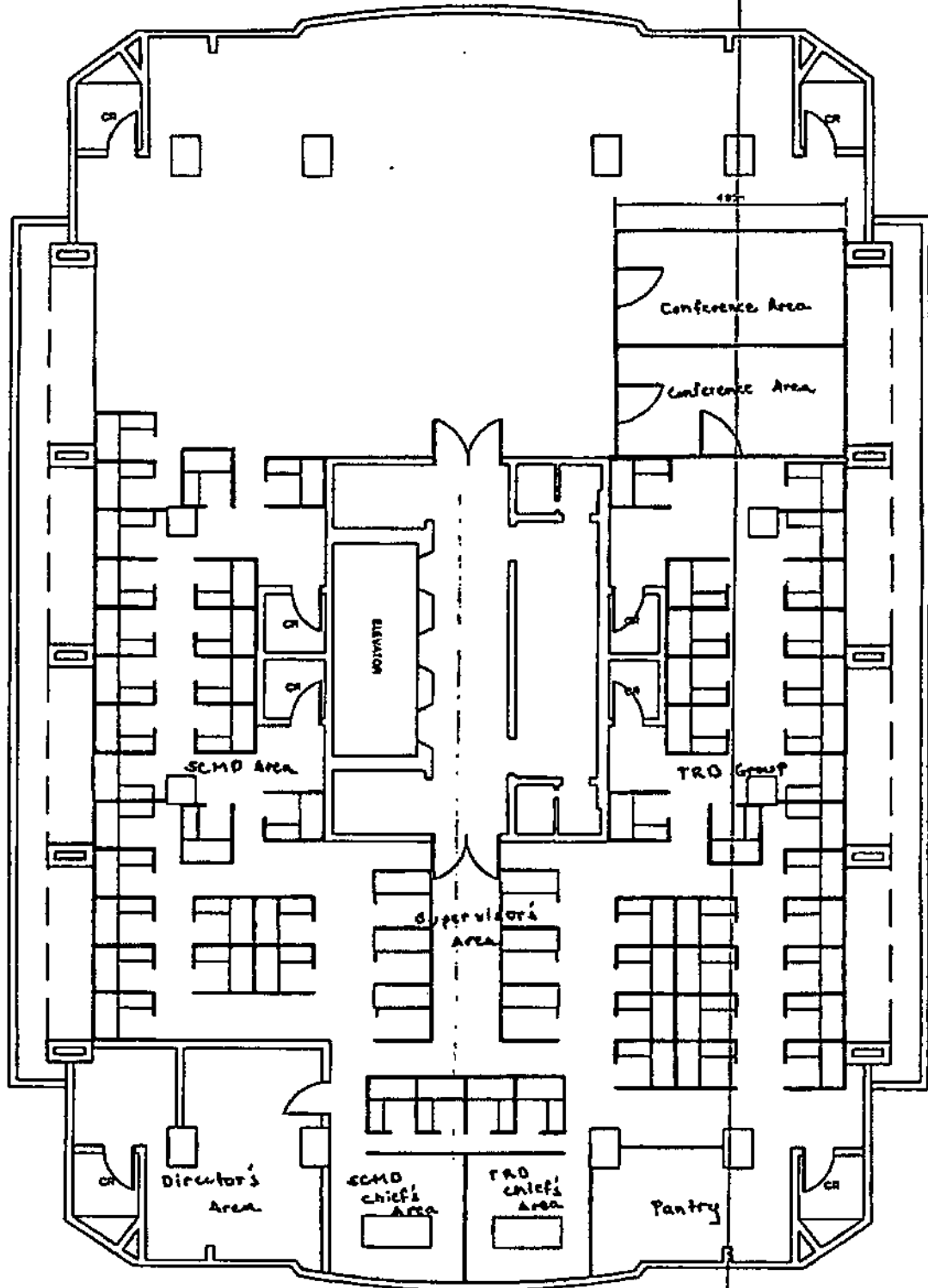




PDF
sketch

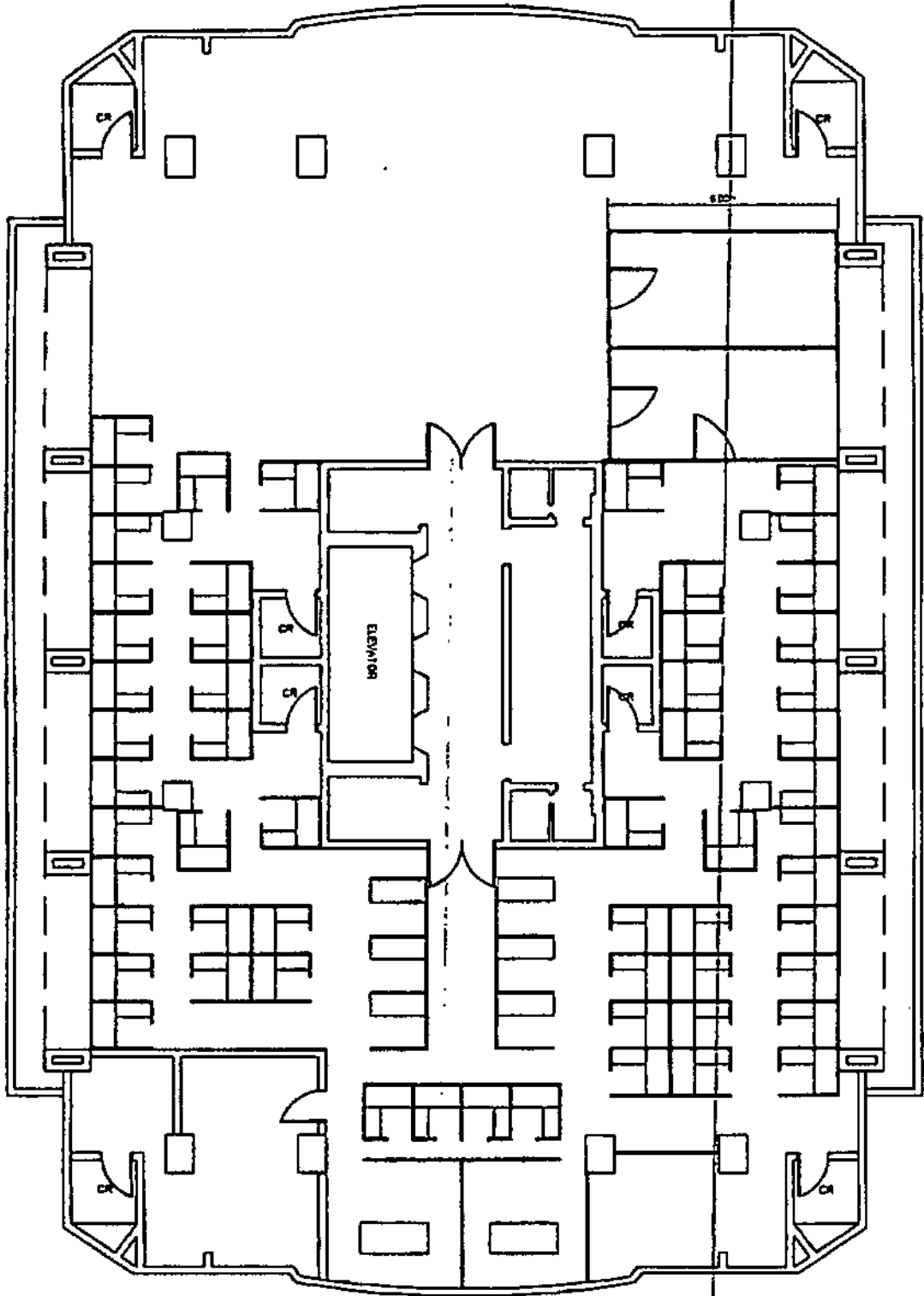


RDS
RDS

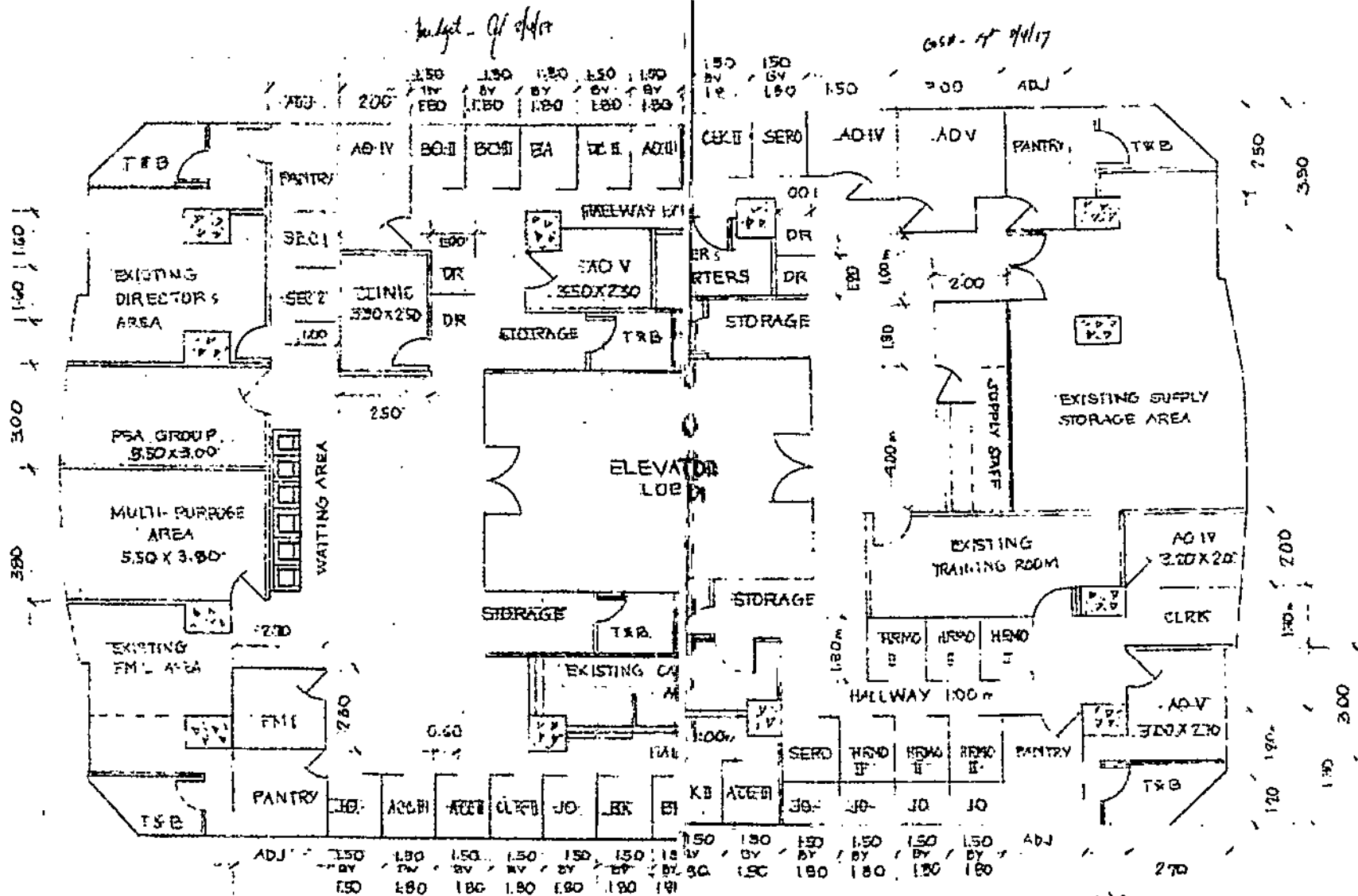


ROS

chrysl



RDS
shah



PAS FLOOR PLAN
SCALE 1/8" = 1'-0"

Handwritten signature
8/2/17