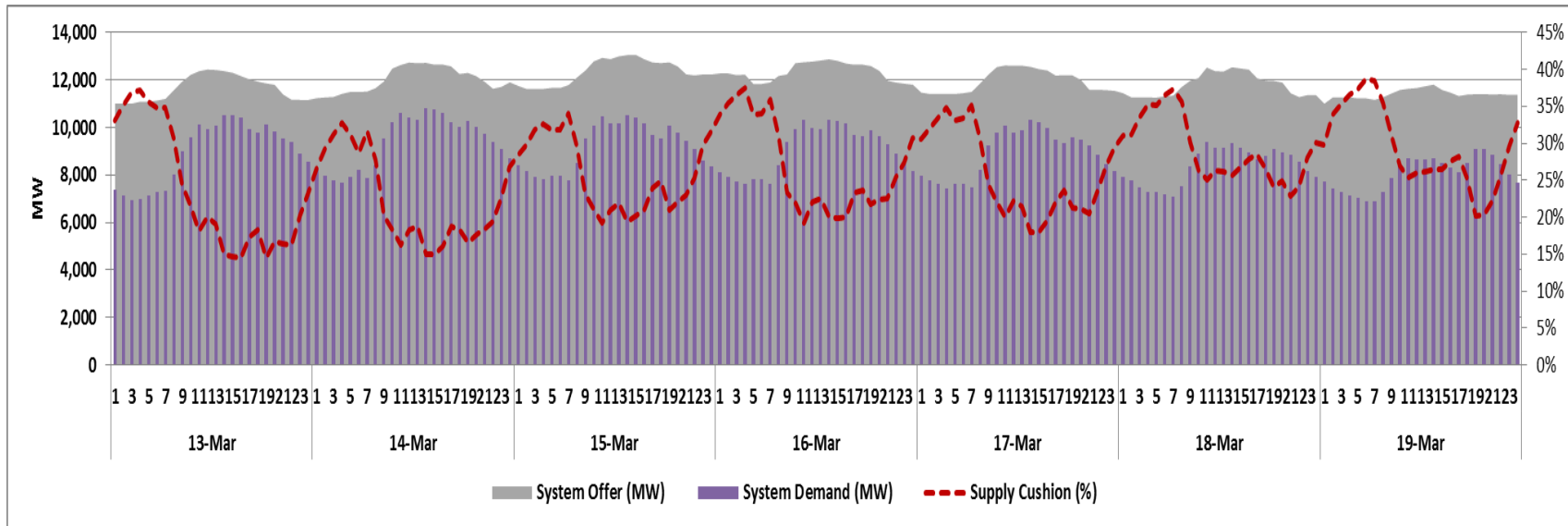


Weekly Market Update 13 -19 March 2017

System Condition¹

Condition	Luzon	Visayas
	168 Total Hours	
Normal	168	168
Blue Alert	0	0
Yellow Alert	0	0
Red Alert	0	0

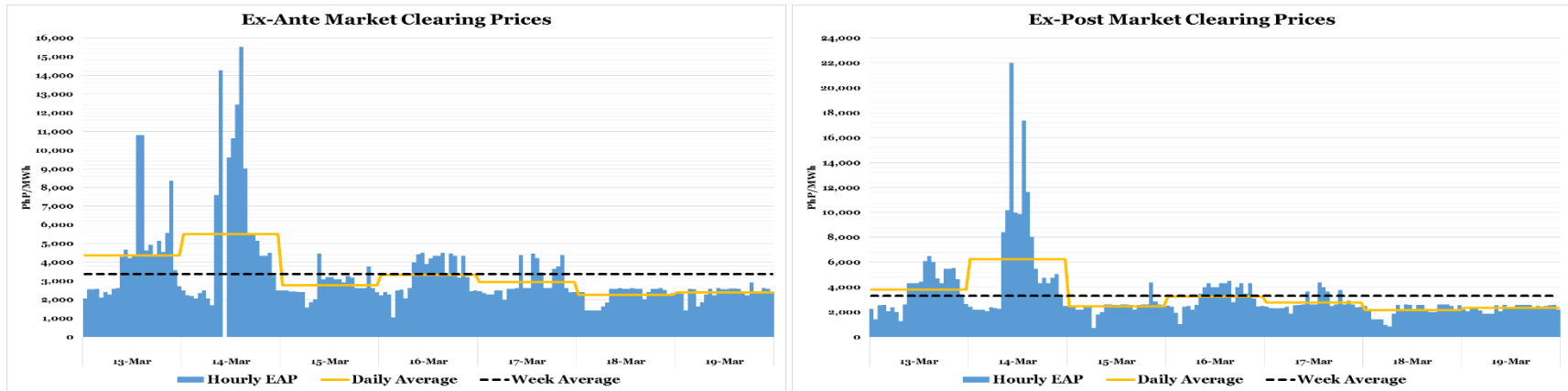
Supply Cushion²



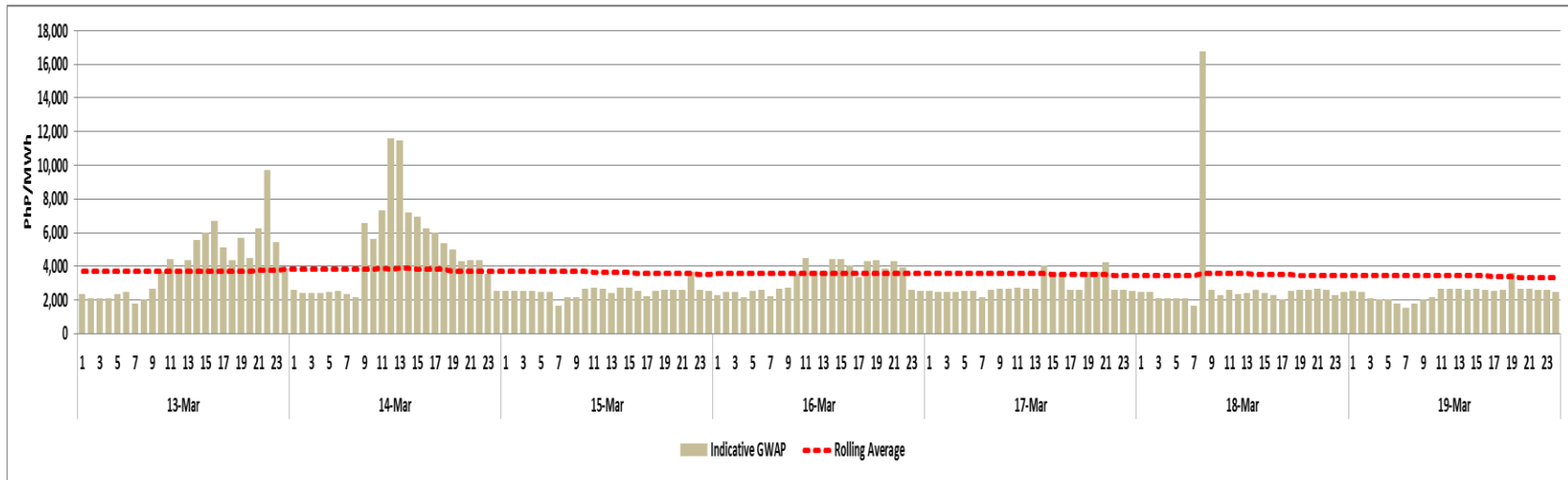
¹ Shows the status of the Luzon and Visayas Grids and the number of hours affected by Blue, Yellow or Red Alert, if any

² Shows the ratio of the difference between the total offered quantity and system demand to total offered quantity

Market Clearing Prices³



GWAP⁴



³ Ex-ante and Ex-post unconstrained clearing prices are not reflective of possible constraint violations

⁴ Shows the following: (i) hourly indicative GWAP including a seven-day (7) rolling average which is a gauge for the Cumulative Price Threshold (CPT) of PhP9,000/MWh set by the Commission, a breach of the CPT triggers the imposition of the PhP6,245/MWh Secondary Price Cap