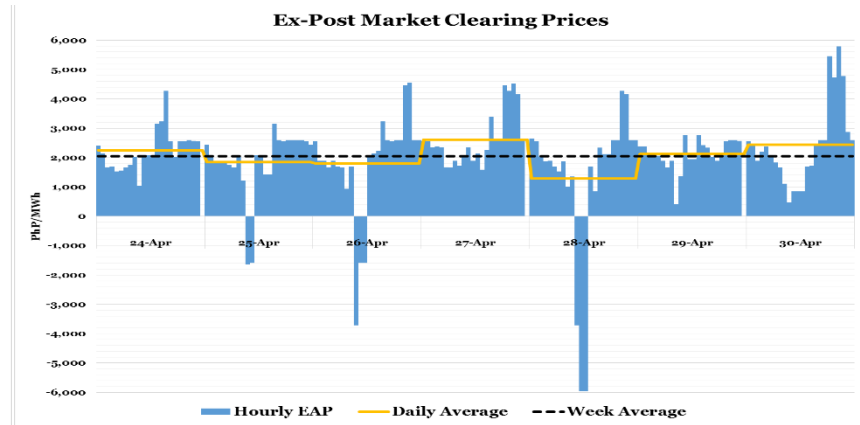
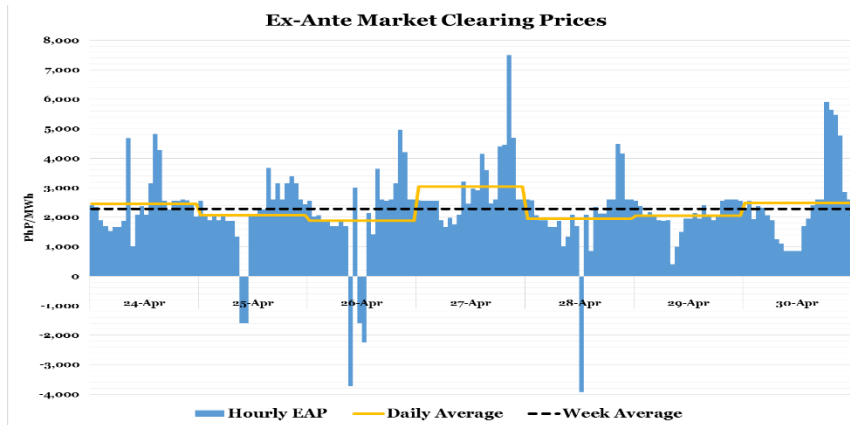


# Weekly Market Update 24 April 2017 -30 April 2017

## System Condition<sup>1</sup>

| Condition    | Luzon           | Visayas |
|--------------|-----------------|---------|
|              | 168 Total Hours |         |
| Normal       | 168             | 168     |
| Blue Alert   | 0               | 0       |
| Yellow Alert | 0               | 0       |
| Red Alert    | 0               | 0       |

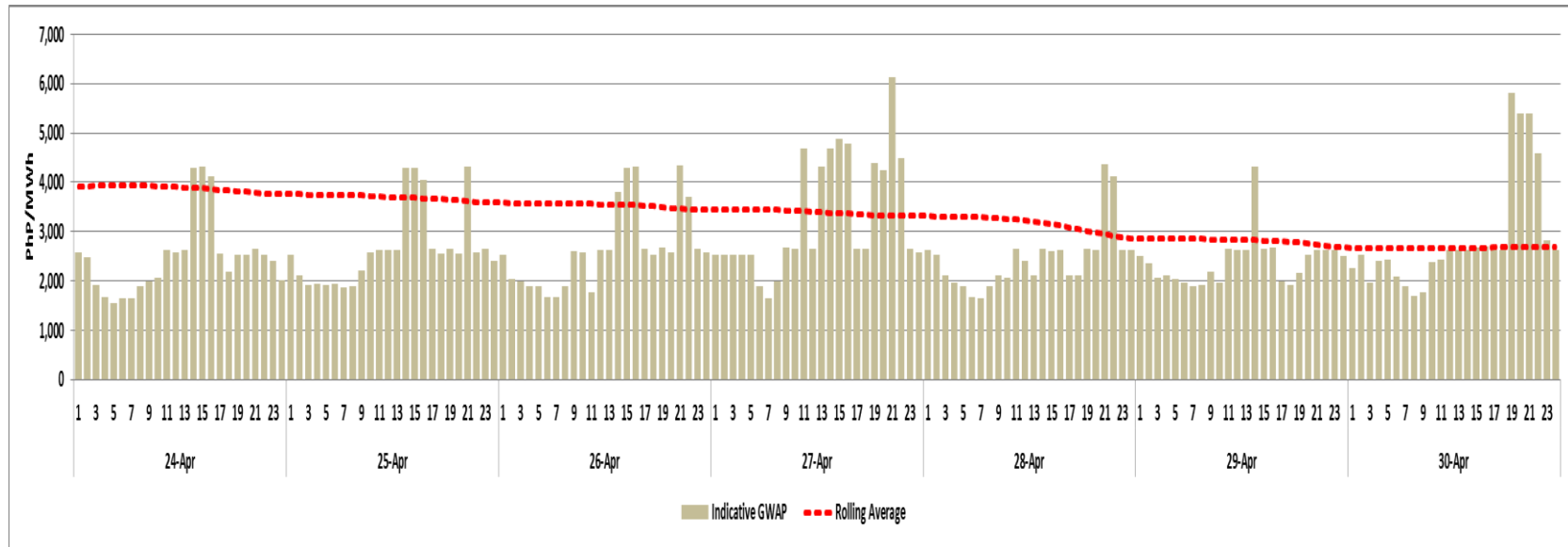
## Market Clearing Prices<sup>2</sup>



<sup>1</sup> Shows the status of the Luzon and Visayas Grids and the number of hours affected by Blue, Yellow or Red Alert, if any

<sup>2</sup> Ex-ante and Ex-post unconstrained clearing prices are not reflective of possible constraint violations

### GWAP<sup>3</sup>



<sup>3</sup> Shows the following: (i) hourly indicative GWAP including a seven-day (7) rolling average which is a gauge for the Cumulative Price Threshold (CPT) of PhP9,000/MWh set by the Commission, a breach of the CPT triggers the imposition of the PhP6,245/MWh Secondary Price Cap