

Republic of the Philippines
ENERGY REGULATORY COMMISSION
San Miguel Avenue, Pasig City



IN THE MATTER OF THE
APPLICATION FOR
AUTHORITY TO DEVELOP,
OWN AND OPERATE
DEDICATED POINT-TO-POINT
LIMITED FACILITIES TO
CONNECT TO THE
TRANSMISSION SYSTEM OF
THE NATIONAL GRID
CORPORATION OF THE
PHILIPPINES (NGCP), WITH
PRAYER FOR PROVISIONAL
AUTHORITY

ERC CASE NO. 2014-110 MC

MIRAE ASIA ENERGY CORP.
(MAEC),

Applicant.

X-----X

DOCKETED
Date: NOV 04 2014
By: *W*

NOTICE OF PUBLIC HEARING

TO ALL INTERESTED PARTIES:

Notice is hereby given that on September 5, 2014, the Mirae Asia Energy Corp. (MAEC) filed with the Commission an application for authority to develop, own and operate dedicated point-to-point limited facilities to connect to the transmission system of the National Grid Corporation of the Philippines (NGCP), with prayer for provisional authority.

In the said application, MAEC alleged, among others, the following:

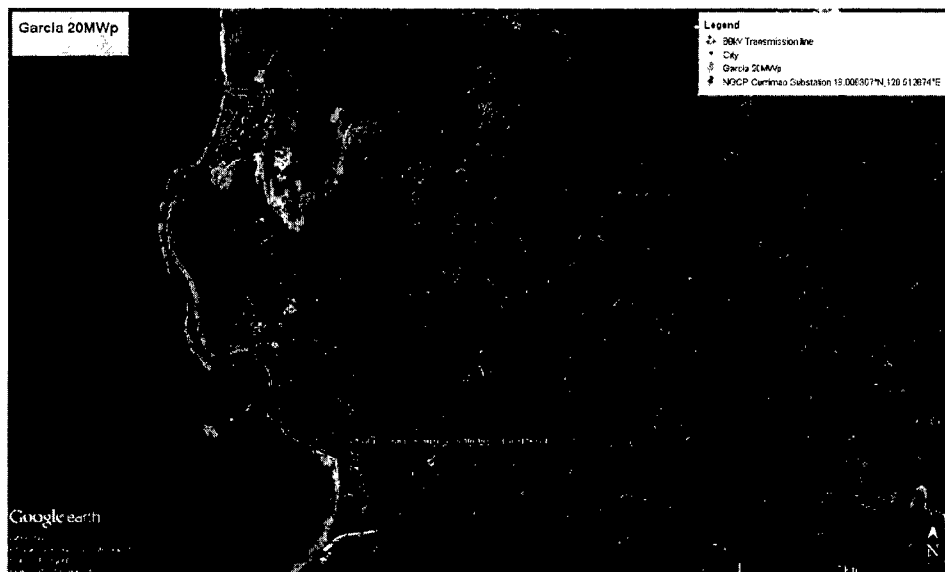
1. It is a power generation company duly organized and existing under and by virtue of the laws of the Republic of the Philippines, with principal office address at P1-08 Makati Palace Hotel, P. Burgos corner Caceres St., Brgy. Poblacion, Makati City. It may be served orders and other legal process through its undersigned counsel;
2. It is a power generation company organized pursuant to the EPIRA and other applicable laws. Its primary purpose is to engage in the business of development and construction of electrical power plants utilizing renewable energy resources such as solar photovoltaic and hydro resources;¹
3. It is a registered renewable energy developer of the Department of Energy (DOE) with a service contract for the exploration, development and utilization of solar energy resource in Currimao, Ilocos Norte;²
4. In its 2013 Supply-Demand Outlook, the Department of Energy (DOE) recognized the growing demand for power in the Philippines. For the Luzon Grid, the DOE projects the energy demand to increase at an average annual growth rate (AAGR) of 4.13 percent, from 7,969 MW in 2012 to 10,693 MW in 2020 and will increase further to 16,477 MW in 2030." Based on the foregoing, the grid still needs 8,100 MW of additional capacities of 6,000 MW base-load plant and 2,100 MW peaking plants to meet the electricity demand and the required reserve margin of the grid;³
5. To help address the need for additional capacity in the Luzon Grid, it will design, engineer, procure, construct, supply, start-up, test, commission, own, operate, and maintain an approximately 20 MW solar power plant (Project) to be located at Brgy. Paguludan-Salindeg, Currimao, Ilocos Norte. The Project is projected to be completed and energized on February 28, 2015;

¹Copies of MAEC's Certificate of Incorporation, Amended Articles of Incorporation and By-Laws are attached hereto as **Annexes "A", "A-1" and "A-2"** and made integral part hereof.

² A copy of MAEC's Certificate of Registration as an RE Developer is attached hereto as **Annex "B"** and made an integral part hereof.

³A copy of the Department of Energy's ("DOE") 2013 Supply-Demand Outlook (please see Figure: Luzon Grid Supply-Demand Outlook, 2012-2030, p. 2) is attached hereto as **Annex "C"** and made an integral part hereof.

6. It has already secured the endorsement of the affected local governments for the Project.⁴ It has likewise obtained an Environmental Compliance Certificate for the Project;⁵
7. To test, commission and dispatch its generating facility, soon after completion, it proposes to connect the Project to the transmission system of the National Grid Corporation of the Philippines (NGCP) through a dedicated point-to-point limited interconnection facility (the Transmission Line) to be developed by MAEC;⁶
 - 7.1 It intends to connect the Transmission Line to NGCP's 69 kV Currimao Substation. The Transmission Line will be a 69 kV, Single Circuit transmission line consisting of 336.4 MCM ACSR conductors equipped with Optical Fiber Ground Wire ("OPGW").⁷ The Transmission Line will consist of approximately 10.5 kilometers;
 - 7.2 The proposed interconnection of the Project to the Ormoc Substation is as follows:



⁴ Copies of Resolution No. 2012-04 issued by the Sangguniang Barangay of Brgy. Paguludan-Salindig, Resolution No. 2012-03-07 issued by Sangguniang Bayan of Currimao, and Resolution No. 109-2012 issued by Sangguniang Panlalawigan of Ilocos Norte are attached as **Annexes "D"** to **"D-2"** respectively, and made integral parts hereof.

⁵ A copy of the Environmental Compliance Certificate is attached as **Annex "E"** and made an integral part hereof.

⁶ A copy of the description and scope of the project denominated as Project Description is attached as **Annex "F"** and made an integral part hereof.

⁷ A copy of the conceptual engineering design denominated as Transmission Line Design is attached as **Annex "G"** and made an integral part hereof.

8. The construction of the Transmission Line will take approximately twenty (20) weeks from initial pre-construction works. Consistent with the projected date of energization of the Project, the Transmission Line is targeted to be completed by January 2015.⁸ The estimated cost for the Transmission Line is Sixty Three Million Seven Hundred Fifteen Thousand Seven Hundred Thirty-Two and 3/100 Pesos (Php63,715,732.03);⁹
9. The connection of the Project through the Transmission Line to the Currimao Substation is the most viable option among all the interconnection schemes it considered, recommended, and evaluated that will enable it to dispatch the Project's capacity when the need arises.¹⁰ A System Impact Study (SIS) on the proposed Transmission Line has been conducted and based on the results thereof, the said interconnection is technically feasible.¹¹ The SIS has also been reviewed and approved by NGCP.¹² It is in the process of entering into discussions for a connection agreement with NGCP;
10. The Project has already been considered in NGCP's 2013 Consultation Draft Report of the Transmission Development Plan (TDP);¹³
11. Section 9(f) of the Electric Power Industry Reform Act (EPIRA) provides:

"Xxx

A generation company may develop and own or operate dedicated point-to-point limited transmission facilities that are consistent with the TDP: Provided, that such facilities are required only for the purpose of connecting to

⁸ A copy of the Project Schedule Gantt chart is attached as **Annex "H"** and made an integral part hereof.

⁹ A copy of the detailed cost estimates denominated as Transmission Line Cost is attached as **Annex "I"** and made an integral part hereof.

¹⁰ The discussion of the options/alternatives considered in lieu of the proposed Transmission Line is found in the Project Description attached as **Annex "F"**.

¹¹ A copy of the System Impact Study is attached as **Annex "J"** and made integral parts hereof.

¹² A copy of NGCP's Review of the Third Party System Impact Study is attached as **Annex "K"** and made an integral part hereof.

¹³ A copy of NGCP's 2013 Transmission Development Plan Consultation Draft Report, Volume I Major Network Development (Please see Table 4.4(a): List of Luzon Generation Capacity Addition, pp. 25-26) is attached as **Annex "L"** and made an integral part hereof.

the transmission system, and are used solely by the generating facility, subject to prior authorization by the ERC. Xxx”

12. In accordance with the requirement of Section 9(f) of the EPIRA, it hereby seeks the Commission’s authorization to develop, own, and operate the Transmission Line, a dedicated point-to-point limited interconnection facility, to connect the Project to the NGCP Currimao Substation;
13. The proposed Transmission Line meets the requirements provided in Section 9 of the EPIRA and the relevant regulations issued by the Commission as follows:
 - 13.1 The Transmission Line is a dedicated point-to-point limited interconnection facility whose sole purpose is to connect the Project to the Grid through the NGCP Ormoc Substation and is considered a “Connection Asset” under ERC Resolution No. 16, Series of 2011 (ERC Resolution);
 - 13.2 The Transmission Line will be exclusively used by the MAEC for the operations of the Project and will not serve any end-user;
 - 13.3 The Transmission Line is part of the 2013 TDP of the NGCP;¹⁴
 - 13.4 The Transmission Line is technically feasible;¹⁵ and
 - 13.5 It has the technical and financial ability to develop, construct, operate, and maintain the Transmission Line;

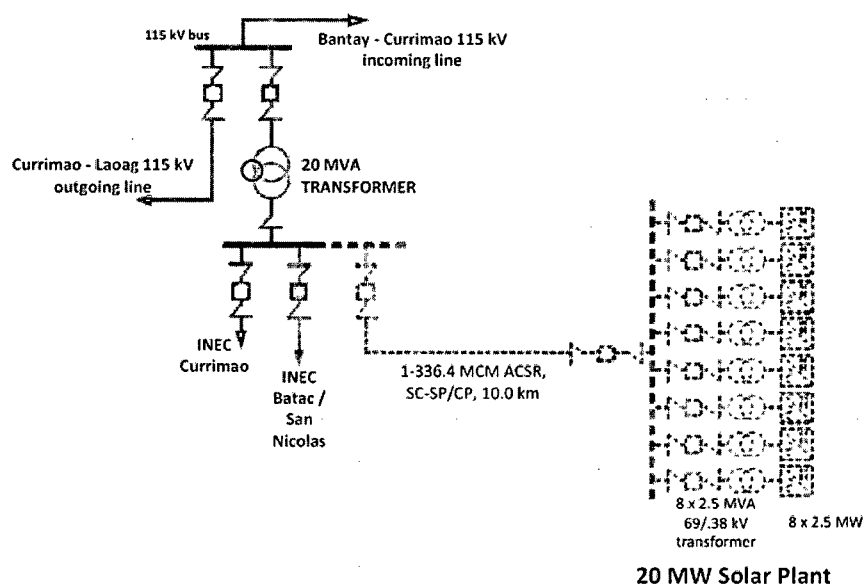
The Transmission Line is a dedicated point-to-point transmission facility and will be used exclusively by MAEC

¹⁴ Supra note 13.

¹⁵ Supra note 11.

14. To reiterate, the Transmission Line is designed for the sole purpose of connecting the Project to the Grid through the NGCP Currimao Substation. The single-line diagram of the proposed interconnection shows that the Transmission Line will be exclusively used by it and is not designed and configured to serve end-users.

The single-line diagram of the Transmission Line is illustrated in Figure 2 below:



15. The Transmission Line is also classified as a “Connection Asset” under the ERC Resolution since it is primarily designed to connect the Project to the Grid and will be used for the conveyance of electricity from the Project to the Grid.¹⁶ If the Transmission Line is taken out of the transmission system of NGCP, such disconnection will only affect MAEC and will have no effect on the Grid, or other connected customers;

**The Transmission Line
is consistent with the
2013 Transmission
Development Plan (TDP)**

¹⁶ Resolution Adopting the Amended Rules on the Definition and Boundaries of Connection Assets for Customers of Transmission Providers, ERC Resolution No. 16, Series of 2011, Annex A, § 2, p.1.

16. The proposed Transmission Line is consistent with the TDP. The TDP refers to the program for managing the transmission system through efficient planning for the expansion, upgrading, rehabilitation, repair, and maintenance, formulated by the DOE and implemented by the NGCP. The 2013 TDP identifies the Project as one of the proposed generating plants in Luzon.¹⁷ The 2013 TDP states:

Xxx 4.4 Generation Capacity Addition

This section shows the proposed generating plants in Luzon, Visayas and Mindanao Grids

based on DOE List of Private Sector-Initiated Power Projects as of December 13, 2013 (the 2012 PDP Update).

The DOE has also provided the list of generating plants that already have clearance to undertake System Impact Study (SIS) but are not included yet in the said 2012 PDP Update since the reports on the status of their development are not yet submitted. This list will fall under the new classification named the Prospective Projects.

Thus, there will be three generation project classifications, as follows:

- a. Committed - These are projects that have service contracts in place, are in the development/commercial stage and have financial close already.
- b. Indicative – Projects with service contracts, in the development/commercial stage but with no bank financing yet.
- c. Prospective – Projects with DOE clearance to undertake SIS and service contracts and on the predevelopment stage. These projects are not included in the official list of

¹⁷ Supra note 13.

DOE's "Private Sector-Initiated Power Projects".

...

Table 4.4(a):
 List of Luzon Generation Capacity Addition
 (DOE List of Private Sector-Initiated Power Projects
 as of December 13, 2013)

Comm. Year	Proposed Generation Facility	Capacity (MW)	Location
...			
2014	Mirae Currimao Solar	20	Currimao, Ilocos Norte

17. Recently, the Project was included as one of the indicative projects in the DOE List of Private Sector-Initiated Power Projects for Luzon as of February 28, 2014.¹⁸ The said DOE list reads in part:

Committed / Indicative	Name of the Project	Project Proponent	Location	Rated Capacity (MW)	Project Status	Target Testing and Commissioning
	SOLAR					
Indicative	Currimao Solar Photovoltaic Power Project	Mirae Asia Energy Corporation.	Currimao, Ilocos Norte	20	- Awarded with Solar Energy Service Contract (SESC No. 2012-08-020) on 19 Sept. 2012; - Secured Memorandum of Agreement with Provincial Government of Ilocos Norte for the utilization of the land; Completed feasibility study; Conducted Third Party SIS, currently under review by NGCP; Acquired ECC from DENR, CNO from NCIP; Provincial, Municipal and Barangay Resolutions of Support, EPC Contract with LG CNS Co. Ltd., and proofs of negotiations/certifications with financial institutions for project financing; -Secured Clearance from Doe for the conduct of	August 2014

¹⁸ A copy of the DOE List of Private Sector-Initiated Power Projects (Luzon), as of February 28, 2014 is attached as Annex "M" and made an integral part hereof; please see p. 11 thereof.

					GIS on 11 October 2012; -Conducted Groundbreaking Ceremony on Nov. 2012; Acquired the DOE – Certificate of Confirmation of Commerciality on 12 Jul 2013; -Total project cost is US\$51.9Million; -Negotiations with lenders is on-going.	
--	--	--	--	--	--	--

**The Transmission Line
 is technically feasible**

18. The SIS conducted by EAGLE Engineering Solutions Corporation shows that the connection of the Project through the Transmission Line to be developed, owned, and operated by it, to the Currimao Substation is technically feasible.¹⁹

18.1 The SIS concluded that connection of the proposed 20MW Project to the Luzon Grid is technically acceptable and may, in fact, reduce the loadings of the 230/115 kV transformer in Laoag and San Esteban as well as associated transmission facilities,²⁰ and

18.2 On December 9, 2013, NGCP approved the SIS submitted by it for the Project,²¹

19. It proposed the Transmission Line connection to the Currimao Substation because of its proximity for the connection of the Project. Between the options considered for the route of the Transmission Line, the option traversing and utilizing the city road was found to be more feasible and economical,²²

20. It is also in the process of finalizing the Facility Study and have sent the Facility Study Report for review with the NGCP for the Connection Agreement;

¹⁹ Supra note 11.

²⁰ Id.

²¹ Supra note 12.

²² Supra note 6.

21. It has likewise ensured that the design and technical specifications for the Transmission Line are consistent with the standards of the Philippine Grid Code;²³

MAEC has the technical and financial capability to develop, construct, operate, and maintain the Transmission Line

22. It has the technical capability to develop the Transmission Line.

22.1 The Transmission Line will be constructed by Tri-Ohms Engineering, a company established by Engr. Geronimo Perey, specializes in rehabilitation, rewinding, testing and commissioner of power transformer. It is also engaged in the hauling and installation of power transformers and HV equipments;²⁴ and

22.2 It likewise has the financial capability to undertake the development and construction of the Transmission Line. The development and construction of the Project and the Transmission Line will be funded by it through equity from shareholders and debt financing.²⁵

23. Since the development and construction of the Transmission Line will be solely funded by it and its shareholders and the Transmission Line will be exclusively used by it for the operations of the Project and will not serve any end-user, the Transmission Line will not have an impact on the transmission rates currently being charged by the NGCP;

24. Once completed, it will undertake the operations and maintenance of the Transmission Line through the NGCP

²³ Supra note 7.

²⁴ A copy of the Company Profile of Tri-Ohms Engineering with a list of projects undertaken is attached as **Annex "N"** and made an integral part hereof.

²⁵ A copy of MAEC's 2011, 2012 and 2013 Audited Financial Statements are attached as **Annex "O", "O-1" and "O-2"** and made an integral part hereof.

and it will subsequently fund the operations of the Transmission Line from its generation sales;²⁶

25. It also undertakes to file an application for a Certificate of Compliance with the Commission;
26. The foregoing clearly shows that the proposed Transmission Line complies with Section 9 of the EPIRA and the relevant regulations of the Commission;

Motion for Provisional Authority and Allegations in Support of Prayer for Provisional Authority

27. Rule 14 of the Commission's Rules of Practice and Procedure authorizes the issuance of a provisional authority or an interim relief prior to a final decision, provided that the facts and circumstances warrant the issuance of the same;
28. It prays that the Commission provisionally authorize the development, ownership, and operation of the Transmission Line considering that the facts, circumstances and the magnitude of the opportunity costs entailed by any further delay in the interconnection of the Project warrants the issuance of a Provisional Authority.
 - 28.1 It hopes to be able to complete development and construction of the facilities at the soonest possible time in order to be able to dispatch electric power supply to the transmission system of NGCP;
 - 28.2 The Project is one of the energy projects under Republic Act No. 9513 or the Renewable Energy Act of 2008, which aims to accelerate the development and utilization of the country's renewable energy sources. Thus, it is in the interest of the government to help RE developers such as MAEC to achieve commerciality and commence operations at the soonest practicable time;

²⁶ A copy of MAEC's Financial Feasibility Study and Projected Financial and Economic Cost Analysis are attached as **Annex "P" and "Q"** and made an integral part hereof.

28.3 The construction of the Transmission Line is a prerequisite for the testing and commissioning, and ultimately, its commercial operations. The Project is projected to be completed and energized on February 28, 2015. Consistent with this timeline, it intends to complete the development and construction of the Transmission Line by January 2015;

28.4 Moreover, the use of solar energy reduces the country's dependence on fossil fuels, which not only minimizes harmful carbon green house emissions in the environment but also reduces the country's exposure to price fluctuations in the international markets;

28.5 Further, given the immediate need for additional capacity by 2015, the completion of the Project and the Timeline within the timeframe is critical to ensure that additional capacity will be available to the Luzon Grid in a timely manner; and

28.6 The issuance of a provisional authority is also critical in light of the DOE's first-come, first-served policy on the Feed-in Tariff ("FIT") allocation. It is thus necessary for it to secure a provisional authority to immediately commence with the construction of the Transmission Line in order to avail of the initial FIT, which is essential to its economic viability.

A copy of the Affidavit executed by Gerald Rubis Pagobo, in support of the prayer for the issuance of provisional authority is attached to the application and made an integral part thereof as **Annex "R"**;

29. It is in such context that it prays that provisional authority be immediately issued for the development and construction of the proposed Transmission Line; and

30. It prays that the Commission:

- a. **ISSUE** an order provisionally authorizing it to implement the development, ownership and operation of the Transmission Line; and
- b. **APPROVE** the application for authority to develop, own and operate the Transmission Line.

The Commission has set the application for initial hearing, expository presentation, pre-trial conference and evidentiary hearing on **November 25, 2014 (Tuesday) at ten o'clock in the morning (10:00 A.M.) at the ERC Hearing Room, 15th Floor, Pacific Center Building, San Miguel Avenue, Pasig City.**

All persons who have an interest in the subject matter of the proceeding may become a party by filing, at least five (5) days prior to the initial hearing and subject to the requirements in the ERC's Rules of Practice and Procedure, a verified petition with the Commission giving the docket number and title of the proceeding and stating: (1) the petitioner's name and address; (2) the nature of petitioner's interest in the subject matter of the proceeding, and the way and manner in which such interest is affected by the issues involved in the proceeding; and (3) a statement of the relief desired.

All other persons who may want their views known to the Commission with respect to the subject matter of the proceeding may file their opposition to the application or comment thereon at any stage of the proceeding before the applicant concludes the presentation of its evidence. No particular form of opposition or comment is required, but the document, letter or writing should contain the name and address of such person and a concise statement of the opposition or comment and the grounds relied upon.

All such persons who may wish to have a copy of the application may request the applicant, prior to the date of the initial hearing, that they be furnished with a copy of the application. The applicant is hereby directed to furnish all those making such request with copies of the application and its attachments, subject to reimbursement of reasonable photocopying costs. Likewise, any such person may examine the application and other pertinent records filed with the Commission during the usual office hours.

WITNESS, the Honorable Chairperson, **ZENAIDA G. CRUZ-DUCUT**, and the Honorable Commissioners, **GLORIA VICTORIA C. YAP-TARUC**, **ALFREDO J. NON** and **JOSEFINA PATRICIA A. MAGPALE-ASIRIT**, Energy Regulatory Commission, this 3rd day of November, 2014 at Pasig City.

ATTY. NOEL J. SALVANERA
Director III, Legal Services